

Gofalwn Cymru

Cefnogi recriwtio i'r sector gofal

WeCare Wales

Supporting recruitment into the care sector



Gofalwn
.cymru

WeCare
.wales

Beth yw Gofal Cymdeithasol?

Helpu pobl i gynnal eu hannibyniaeth a chefnogi eu llesiant yn eu cartref eu hunain neu mewn lleoliad preswyl.

"Cefnogi rhai o'r bobl sydd fwyaf agored i niwed yng Nghymru "

What is Social Care?

Helping people to maintain their independence and support their well-being in their own home or in residential setting.

"Supporting some of the most vulnerable people in Wales"

Gofalwn
.cymru

WeCare
.wales

Beth yw Blynyddoedd Cynnar a Gofal Plant?

Cefnogi plant ifanc mewn
lleoliadau cyn-ysgol fel
meithrinfeydd a
gwarchodwyr plant hefyd.

What is Early Years and Childcare?

Supporting young children in
preschool settings such as
nurseries and also
childminders.

Beth yw **Gofalwn** Cymru?

Codi ymwybyddiaeth a chanfyddiad y cyhoedd o ofal cymdeithasol a'r blynyddoedd cynnar a'r cyfleoedd gyrfaol.

What is **WeCare** Wales?

To raise the public awareness and perception of social care and early years and career opportunities.



Pam gweithio ym maes gofal?

- 113,000 o bobl yng Nghymru yn gweithio ym maes gofal cymdeithasol a blynyddoedd Cynnar
- 1,500+ o gyflogwyr
- Mae angen mwy o bobl i ymuno â'r sectorau
- Mae llawer o rolau ac arbenigeddau amrywiol ar gael (75+)
- Efallai bod gan bobl y sgiliau eisoes
- Mae'n anodd ond yn werth chweil.

Why work in care?

- 113,000 people in Wales work in social care and early years
- 1,500+ employers
- More people are needed to join the sectors
- There are many varied roles and specialisms available (75+)
- People may already have the skills
- It's demanding but rewarding.

Pam gweithio ym maes gofal?

- Gwneud gwahaniaeth – rolau gwobrwyol yn cefnogi rhai o'r bobl sydd mwyaf agored i niwed yn ein cymdeithas
- Gyrfaoedd – cyfleoedd i wneud cynnydd a datblygu gyrfa ym maes gofal.

Why work in care?

- Making a difference – truly rewarding roles supporting some of the most vulnerable people in our society
- Careers – opportunities to progress and develop a career in care.

"Mae'n debyg mai angerdd yw'r peth pwysicaf pan fyddwch yn gweithio yn y sector hwn ... Rwyf am gael effaith, rwyf am wneud newid, rwyf am helpu ... "

"Passion is probably the most important thing when you work in this sector... I want to make an impact, I want to make a change, I want to help..."



Peter Hornyik,
Gweithiwr Gofal Plant Preswyl
Residential Childcare Worker

Gofalwn
.cymru

WeCare
.wales

Dim ond Gofalwr

Just a Carer



Gofalwn | **WeCare**
.cymru | .wales

Gofalwn | **WeCare**
.cymru | .wales

Mythau

- Mae'r cyflog mewn gofal cymdeithasol yn wael
- Mae gofal cymdeithasol yn swydd ddi-ddiwedd heb unrhyw gyfleoedd hyfforddi a datblygu
- Nid oes dilyniant gyrfaol mewn gofal.

Myths

- The pay in social care is poor
- Social care is a dead-end job with no training and development opportunities
- There is no career progression in care.

Mythau

- Nid yw gofal cymdeithasol yn yrfa werth chweil
- Ni fydd gan gyflogwyr ddiddordeb ynof gan nad oes gennyf unrhyw gymwysterau perthnasol
- Mae gweithio mewn gofal yn golygu oriau anghymdeithasol.

Myths

- Social care is not a worthwhile career
- Employers won't be interested in me as I don't have any relevant qualifications
- Working in care means unsociable hours.

Gweithio ym maes **gofal cymdeithasol**

Working in **social care**



Gofalwn
.cymru

WeCare
.wales

Gweithio gyda phlant

Working with children



Gofalwn
.cymru

WeCare
.wales

Llwybrau i mewn i ofal

Mae llawer o lwybrau i mewn i ofal.

- Gwirfoddoli
- Prentisiaethau
- Profiad gwaith
- Cyflwyniad i hyfforddiant gofal cymdeithasol

Routes into Care

There are many routes into care.

- Volunteering
- Apprenticeships
- Work experience
- Introduction to social care training

Safbwynt gan gyflogwr

Perspective from an employer



Gofalwn
.cymru

WeCare
.wales

Adnoddau


Resources

Gofalwn
.cymru

WeCare
.wales

Accessibility Search Login Cymraeg

[Gofalwn .cymru](#) [WeCare .wales](#) [Home](#) | [Working with Children](#) | [Working with Adults](#) | [Jobs](#) | [Submit a job](#) | [News](#)



Discover a career in care!

If you're passionate about building a career in care, your next role could be just a click away. Whether you're new to the sector, or looking to move up the ladder, discover jobs in your area and make a difference.

[Find a job](#)

< || >

Are you looking for a new job, challenge, or change in career? [Working in care could be perfect for you.](#)

Take a look at our dedicated jobs portal for roles in social care, early years and childcare. Once you've signed up, you will receive updates about available roles in [Feedback](#)

Login or register to find your next job in care

Location

Distance

Salary range

Contract type

Filter your jobs results by selecting from the options below

Location of jobs:

Care homes x

Office based x

People's homes x

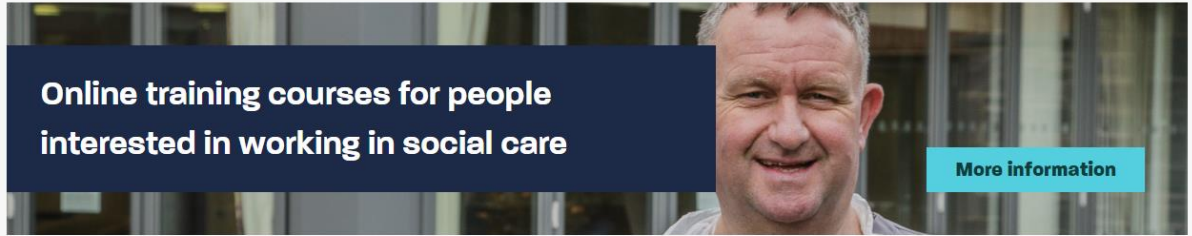
What is it like to work in care?

Take our interactive learning resource to find out more



Start

Online training courses for people interested in working in social care



More information

Rehabilitation Coach (Ref: CSW2)

Case Management Cymru

Location: Torfaen

£12.50per hour / Part Time

At Case Management Cymru we provide highly professional, bespoke case management to adults and children with a range of life-changing conditions/injuries. We pride ourselves on delivering a specialist service that recognises the uniqueness of every client; all with very different aspirations and challenges. The ability to drive with use of a car is essential. We are looking for a friendly...

Feedback

1

Register

Name

Email address

Password

Confirm password

Register

2

Hi Andrew!

What types of job interest you?

Working with:

Adults x Children x

Level of job:

Assistant x Manager x Senior worker x

Location of jobs:

Care Homes x Office based x

People's homes x

Next

3

Nearly there...

Where are you looking for work?

Location

Distance

Complete Registration

Login or register to find your next job in care

Location

Location

Distance

Salary range

Contract type

Filter your jobs results by selecting from the options below

Location of jobs:

- Care homes x Office based x People's homes x

What is it like to work in care?

Take our interactive learning resource to find out more

Start

Online training courses for people interested in working in social care

More information

Rehabilitation Coach (Ref: CSW2)

Case Management Cymru

Location: Torfaen £12.50per hour / Part Time

At Case Management Cymru we provide highly professional, bespoke case management to adults and children with a range of life-changing conditions/injuries. We pride ourselves on delivering a specialist service that recognises the uniqueness of every client; all with very different aspirations and challenges. The ability to drive with use of a car is essential. We are looking for a friendly...

Feedback

Welcome Andrew

[Dashboard](#)[Account settings](#)[Your applications](#) 1[Logout](#)

Support Worker – Community Reablement Team (Permanent)

Bridgend County Borough
Council

Location: Bridgend County Borough

Permanent

Job title: Support Worker – Community Reablement Team

Date posted: 14/01/2021

Application closing date: 27/01/2021

Location: Bridgend County Borough

Salary: £10,860 per annum

20 hours per week

The Community Resource Team supports individuals to live independently within their home environment. The Team comprises of the following: Early Response, Mobile Response, Better at Home, Telecare, Reablement, Bridgestart, Community Independence and Wellbeing Team, Community Occupational Therapy and Integrated Community Equipment Service.

You will be a key part of the CRT Services providing Domiciliary & Therapy support across Reablement, Early Response, Mobile Response Bridgestart, and Better at Home. This service aims to support people to continue to live in their chosen environment by preventing avoidable hospital or care home admission and to facilitate early discharge from hospital, sometimes on a day to day basis. You will be expected to provide enabling support for a number of people who have lost their skills for a variety of different reasons. Providing encouragement, promoting independence and building confidence. You also provide support with personal care and meal preparation as required across the Bridgend Area.

The service (except Mobile Response) currently operates daily between 7:30 am to 10:00 pm and staff are required to work between these hours to meet service users' needs. You must be committed, enthusiastic and flexible. Full driving licence and access to own transport is essential. Mobile response provides 24 hour cover'.

Protecting children, young people or adults at risk is a core responsibility of all council employees.

Applicants should note that a criminal records check by the Disclosure & Barring Service (DBS) will be necessary for the successful applicant.

Closing Date: Wednesday, 27th January 2021.

Cover letter

0 / 250 words

Upload CV No file chosen[Apply for this job](#)[Feedback](#)

Adnodd dysgu

Learning resource

Sut brofiad yw gweithio mewn gofal?
Gwnewch ein hadnodd dysgu
rhyngweithiol i ddarganfod mwy

Dechrau

What is it like to work in care?
Take our interactive learning
resource to find out more

Start

Meet Ahmed, Jean, Lloyd, Jackie and Ben

OK, now you're ready to get started! Ahmed, Jean, Lloyd, Jackie and Ben work in different care and support settings. You need to complete the challenge for TWO out of the five to get your personal profile at the end. Which two are you most interested in? Choose who you want to watch first by clicking on their photo:



I work in a nursery with children.



I work in a residential care service with older people.



I work in a supported living service with people who have learning disabilities.




I work in the community supporting a range of people in their own homes



I work in the community with specific individuals supporting them at home, at leisure or at work

Disgrifiadau swyddi

Job role descriptions



Ymarferydd Cynorthwyl

Fel **Ymarferydd Cynorthwyl**, byddwch yn gweithio o dan orchwyliaeth i ddarparu gofal i blant.


Gan weithio fel rhan o dim, byddwch yn helpu i greu amgylchedd diogel, crosawgar a chynhwysol i blant, er mwyn defnogi eu gofal, chwarae, djegu a datblygiad.

I fod yn llwyddiannus yn y swydd hon mae angen:

- Natur ofalgar ac amgueddgar
- Sgiliau cyfathrebu da, gan gynnwys sgiliau llafar a gwranddo
- Dychymys a chreadigrwydd
- Y gallu i gynnwys pob plentyn
- Y gallu i dderbyn cyfarwyddyd gan aelodau staff eraill
- Hydier yng nghwmni plant ac oedolion

Am fwy o wybodaeth am y cymwysterau ar gyfer y rôl hon gwelwch **Gofal Cymdeithasol Cymru**.

Swydd cynt [Dod o hyd i gyflogwyr](#) [Gweidd sefiffo](#) [Swydd nesaf](#)



Gweithiwr Cartref Gofal i Oedolion

Fel **Gweithiwr Cartref Gofal i Oedolion**, byddwch chi'n darparu gofal a chymorth i breswylwyr, ac yn eu helpu hefyd i gadw eu hannibyniaeth ac i wneud dewisiadau.

Gan weithio mewn tîm gŵeddi gweithiwr gofal proffesiynol eraill, byddwch chi'n cofnogi preswylwyr i roi cyflun gofal ar weith a'u addae i'w hangenion a'u dewisiadau diwllianol, emosiynol, cymdeithasol a chorfforol personol.

Byddwch chi'n gyfrifol am gweithiau gwaith papur a chadw cofnodion cyfredol ar gyfer pob preswyllydd.

I fod yn llwyddiannus yn y swydd hon mae angen:

- Bwyddysedd dros oflu am bobl hŷn a'u teuluoedd
- Sgiliau cyfathrebu da
- Cydnawsedd a thosturi
- Y gallu i ffaithyn perthnasoedd dibynadwy
- Y gallu i fod yn aelod da o dim
- Sgiliau trethu
- Hysbyswedd
- Y gallu i gadw cofnodion cywir

Am fwy o wybodaeth am y cymwysterau ar gyfer y rôl hon gwelwch **Gofal Cymdeithasol Cymru**.

Swydd cynt [Dod o hyd i gyflogwyr](#) [Gweidd sefiffo](#) [Swydd nesaf](#)

Social Worker

As a **Social Worker**, you'll aim to improve the lives of the people you work with. You'll support people through social and personal difficulties, while promoting their human rights and well-being.

You'll work with individuals, supporting their relationships with their families, groups and links to their community. You'll help them to recognise their strengths, develop their skills and work on problems or challenges they may be facing.

You'll build relationships with individuals, families and carers to help people understand what's important to them. You'll offer information and advice to individuals and other professionals.

You'll carry out assessments to understand if people need care and support, work with individuals, carers and families to produce and review care and support plans. You'll keep records, write reports, attend court, and supervise team members.


You'll work with other professionals, leading or supporting others, to ensure children and adults are kept safe from themselves and others, supported by a clear legal framework and all Wales procedures.

To be successful in this role, you'll need:

- Good communication and interpersonal skills
- A flexible approach to work and able to work as part of a team
- The ability to think critically and be creative and solution-focused
- The ability to build effective relationships and develop rapport
- The ability to adapt to changing circumstances
- Tact, empathy and patience
- A non-judgmental attitude
- Compassion, resilience and a readiness to deal with difficult situations
- Good time management and administrative skills
- Computer literacy
- The ability to understand and carry out legal duties
- Resilience
- Autonomous decision making

Find out more information on qualifications and registration details for this role with [Social Care Wales](#).

[Previous role](#) [Find employers](#) [View setting](#) [Next role](#)



Name: Social Worker Case Study – Amy Davies
Overview: Amy left school with no qualifications and decided she wanted to make a difference to families' relationships. As a qualified social worker, she now works to find forever homes for children and supports vulnerable families to cope with various issues.

Pecyn cymorth rhanddeiliaid

Stakeholder toolkit



Web Banners

A selection of website banners, that you can display on your website.

Download ↓



Logos

Dyma stori ymgyrch Gofalwn Cymru hyn yn hyn..

Lawrlwytho ↓



Lluniau

Dewis o luniau wedi eu brandio y gallwch eu defnyddio fel y dymunwch.

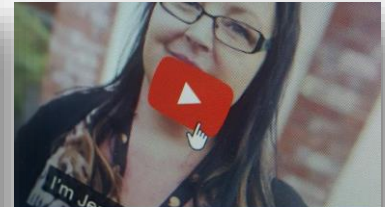
Lawrlwytho ↓



Cyfrngau cymdeithasol

Popeth yr ydych ei angen ar gyfer cyfrngau cymdeithasol, gan gynnwys lluniau proffil, negeseuon, asedau a banerí ar gyfer cyfrngau cymdeithasol.

Lawrlwytho ↓



Videos

Our campaign case study videos are available to download in English and [Welsh](#).

Download ↓

www.Gofalwn.cymru/pecyn-cymorth-rhanddeiliaid/

Username: **Stakeholders**
Password: **Toolkit_WeCare!**

www.WeCare.wales/stakeholder-toolkit

Username: **Stakeholders**
Password: **Toolkit_WeCare!**

Gofalwn | **WeCare**
.cymru | .wales

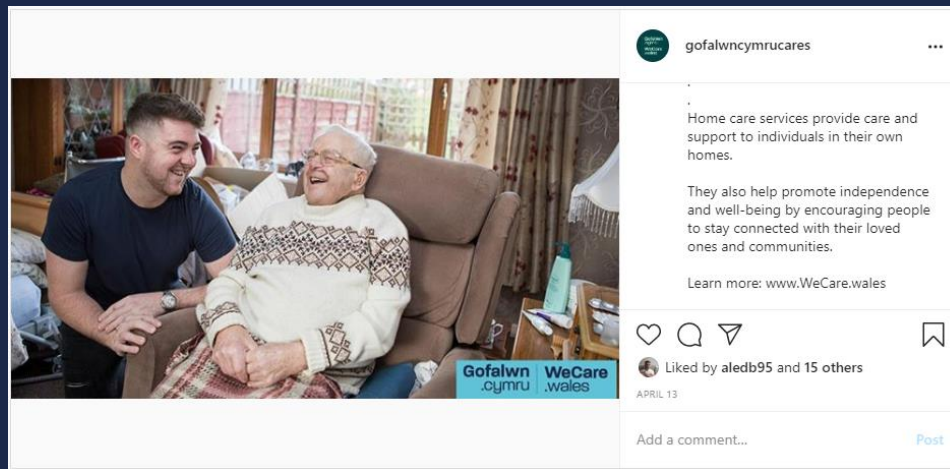
Gwefannau cymdeithasol

Social media

Twitter: @GofalwnCymru
/ @WeCareWales

Instagram:
@GofalwnCymruCares

Facebook:
@GofalwnCymru /
@WeCareWales



Gofalwn
.cymru

WeCare
.wales

Cardiau gyrfa

Career cards

Rheolwr Gwasanaethau Maethu
Byddwch yn arwain tîm sy'n recriwtio a chefnogi gofalwyr maeth, i ddarparu amgylcheddau cartref sefydlog ar gyfer plant a phobl ifanc sy'n byw i ffwrdd o'u cartref teuluol.
Cymwysterau: Yn ofynnol cyn cyflogaeth
Lleoliad: Swyddfa
Cyflog: £ £ £

Rheolwr Tîm Gweithwyr Cymdeithasol (Oedolion)
Byddwch yn gyfrifol am reoli tîm gwaith o ddydd i ddydd. Byddwch yn sbbau ac adnoddau, ac yn gweithio ar adau.
Cymwysterau: Gradd
Swyddfa ac ymweld â chleientiaid
Cyflog: £ £ £

Childminder
You will provide childcare for children under the age of 12, within your own home. You will be self-employed and responsible for running your own business.
Qualifications: Required before registering
Location: Your home
Salary: £ £ £

Support Worker (Adults)
Support individuals, families, groups and communities. You will help people use their strengths, develop their skills and solve any problems or challenges.
Qualifications: Degree
Home base and visiting clients
Salary: £ £ £

Gofalwn .cymru **WeCare .wales**

Gofalwn
.cymru

WeCare
.wales

Gall gweithio ym maes gofal
fod yn yrfa boddhaus a
gwerth chweil

Working in care can be
a fulfilling and rewarding
career



Yn gwneud gwahaniaeth
Make a difference



Dewis gyrfaol cadarnhaol
A positive career choice



Hyblygrwydd
Flexibility



Gwobrwyol
Rewarding

Gofalwn
.cymru

WeCare
.wales

Diolch

www.Gofalwn.Cymru

Trydar: @GofalwnCymru

Instagram: @GofalwnCymruCares

Facebook: @GofalwnCymru

Thank you

www.WeCare.Wales

Twitter: @WeCareWales

Instagram: @GofalwnCymruCares

Facebook: @WeCareWales

Gofalwn
.cymru

WeCare
.wales